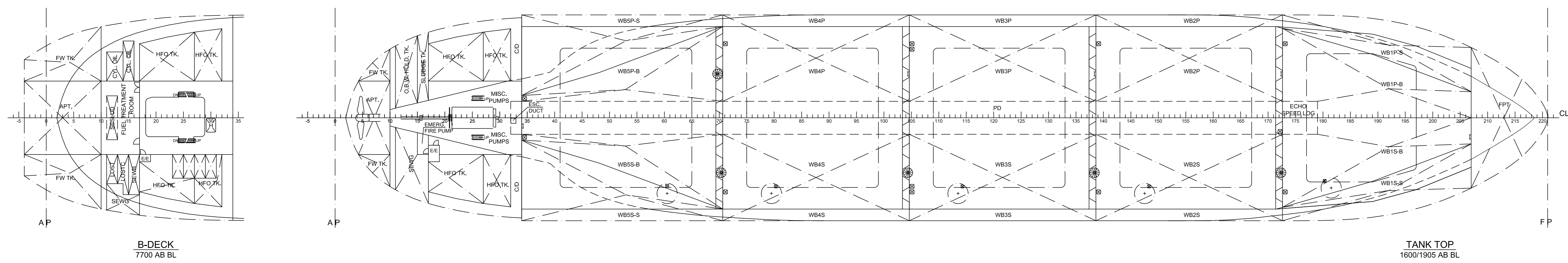
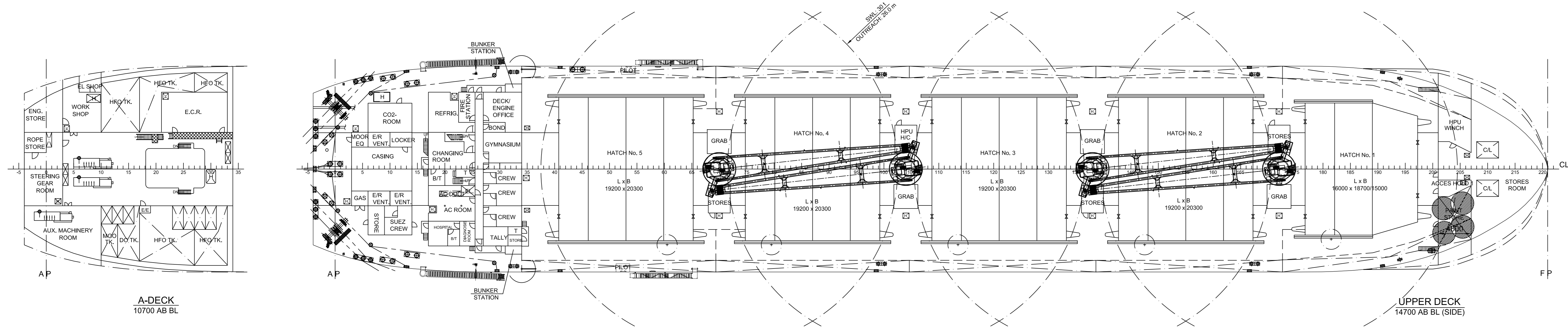
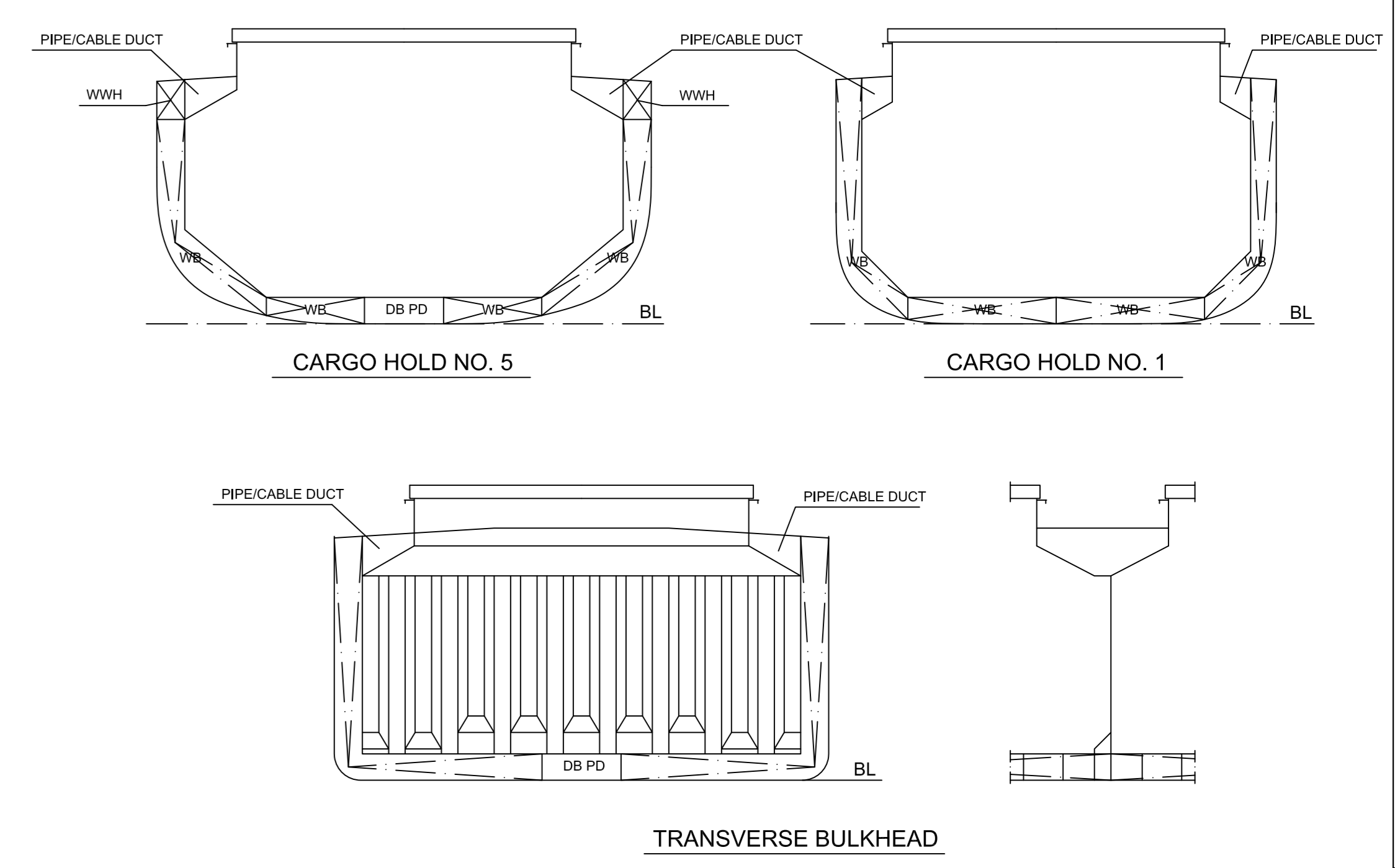
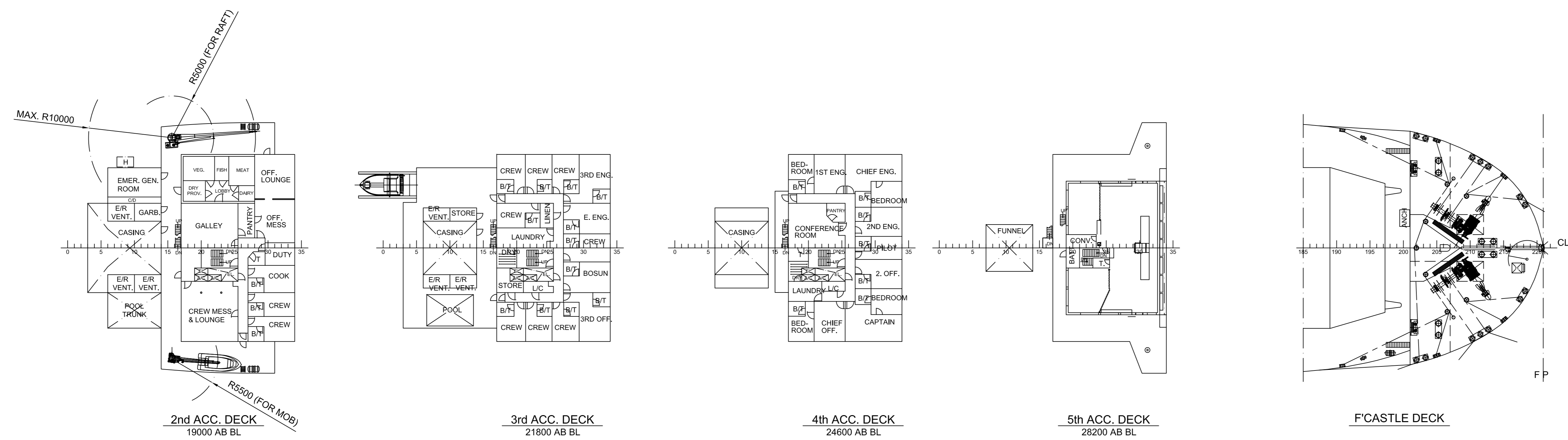
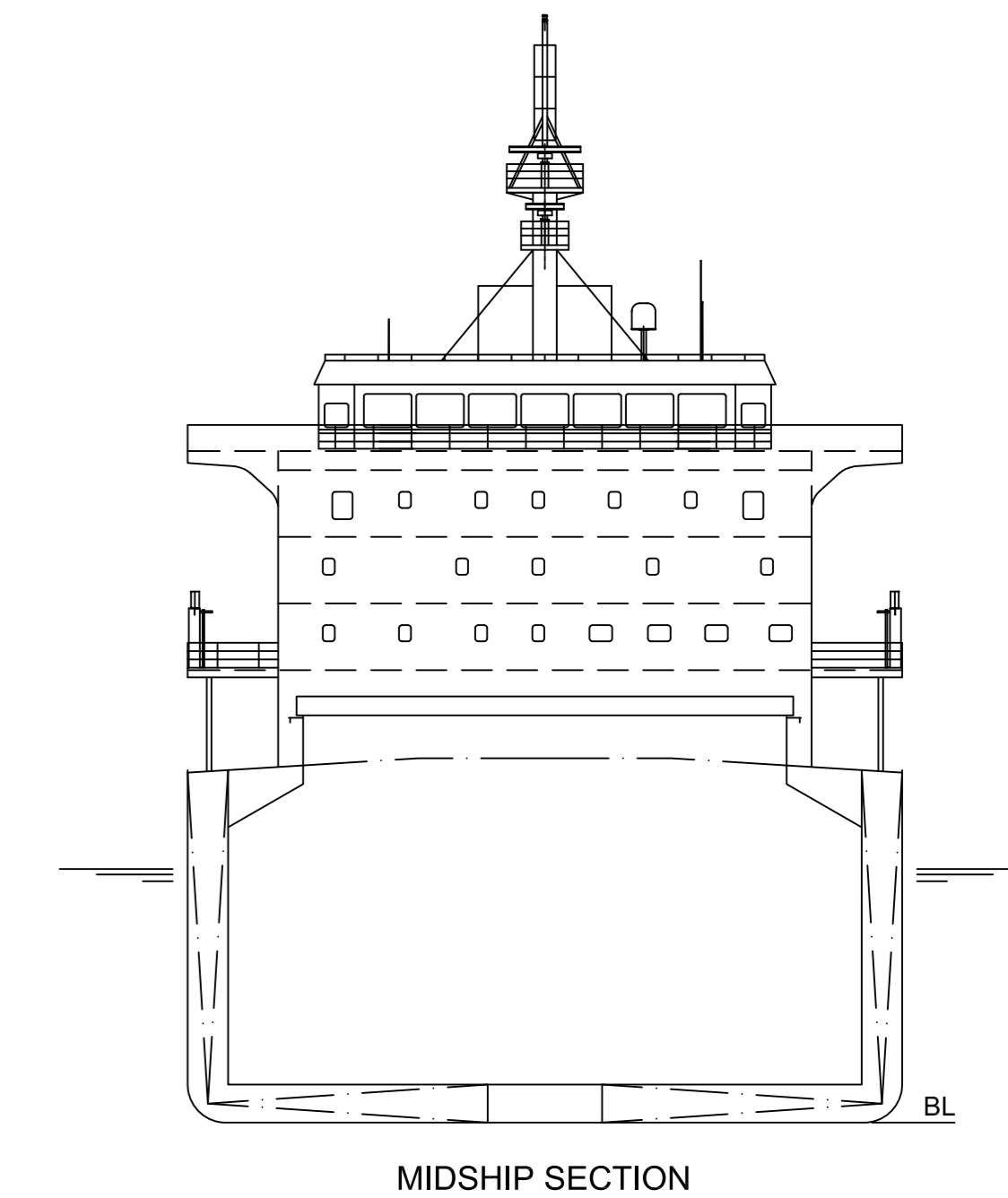
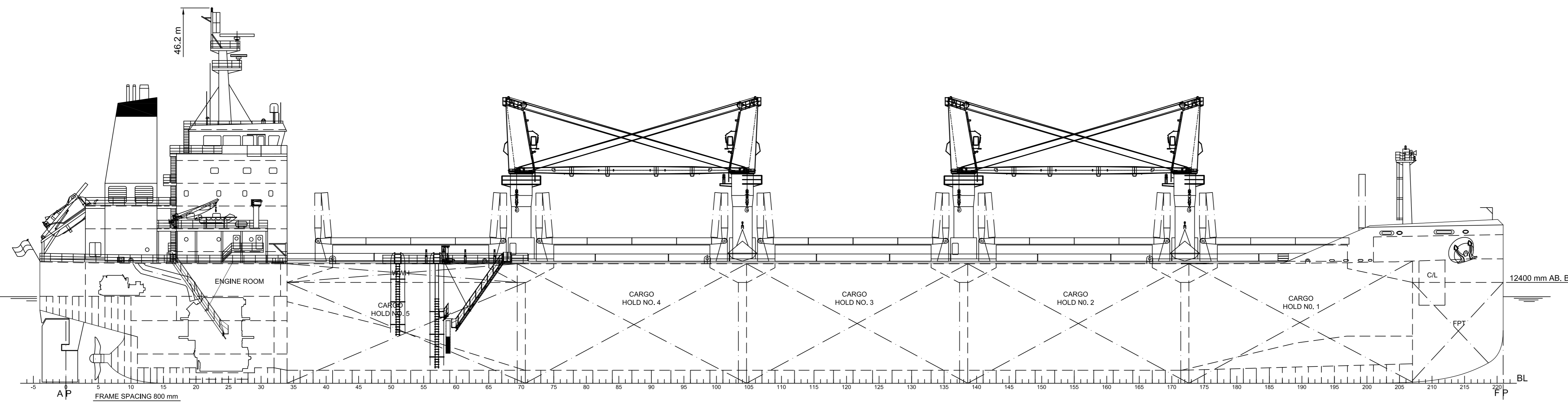


WHEELHOUSE TOP
31200 mm AB. BL
5th ACC. DECK
26200 mm AB. BL
4th ACC. DECK
24600 mm AB. BL
3rd ACC. DECK
21800 mm AB. BL
2nd ACC. DECK
19000 mm AB. BL
1st ACC. DECK 16200 mm AB. BL
UPPER DECK (SIDE)
14700 mm AB. BL
A-DECK 10700 mm AB. BL
B-DECK 7700 mm AB. BL
E/R FLOOR 3750 mm AB. BL
TANK TOP
1600/1905 mm AB. BL



A1 009-01

SEAHORSE 375 - 37,500 DWT BULK CARRIER

MAIN DIMENSIONS (ALL APPROX):

LENGTH OA MAX.	: 180.00 m
LENGTH PP APPROX.	: 176.75 m
RULE LENGTH	: 174.55 m
BREADTH (MLD)	: 30.00 m
DEPTH TO UPPER DECK (MLD)	: 14.70 m
CARGO CAPACITY (100%)	: 46,700 m³
DWT (SCANTLING DRAUGHT)	: 37,500 t
DESIGN DRAUGHT	: 10.10 m
SCANTLING DRAUGHT	: 10.65 m
CB (SCANTLING DRAUGHT)	: 0.84
SERVICE SPEED (DESIGN DRAUGHT)	: 14.00 kn
CORRESPONDING OUTPUT (15% SEA MARGIN)	: 5,675 kW

CLASS NOTATION:
BV I, +HULL, +MACH, Bulk Carrier CSR, CPS(WBT), ESP, BC-A (Holds 2 and 4 maybe empty), GRAB(20), unrestricted navigation, AUT-UMS, heavy cargo, MON-SHAFT, INWATERSURVEY

NOTE:
VESSEL IS PREPARED FOR LATER INSTALLATION OF LOG STANCHIONS. THUS, DWT IS REDUCED TO 37,330 t.

Revision	Description	Dgn./Eng.	Control	Approval	Date
A	UPDATE DAMAGE STABILITY REQUIREMENTS AND MISC	VLB/KAW	DOS	DOS	2012-06-21
-	-	-	-	-	-
-	-	-	-	-	-
-	-	-	-	-	-

Subject: SEAHORSE 375 - GYSB
GUOYU SHIPBUILDING NOS.GY203,GY204

Approval: 40.5299.01
Drawing No. 009-01

Grontmij
Marine
Naval Architects - Marine Engineers - Surveyors

Scale: 1:400
Size: 841x594
Job: SEAHORSE 375 - GYSB
GUOYU SHIPBUILDING NOS.GY203,GY204

Dgn./Eng.: LTA
Control: NHA
Approval: DOS
Date: 2012-03-02