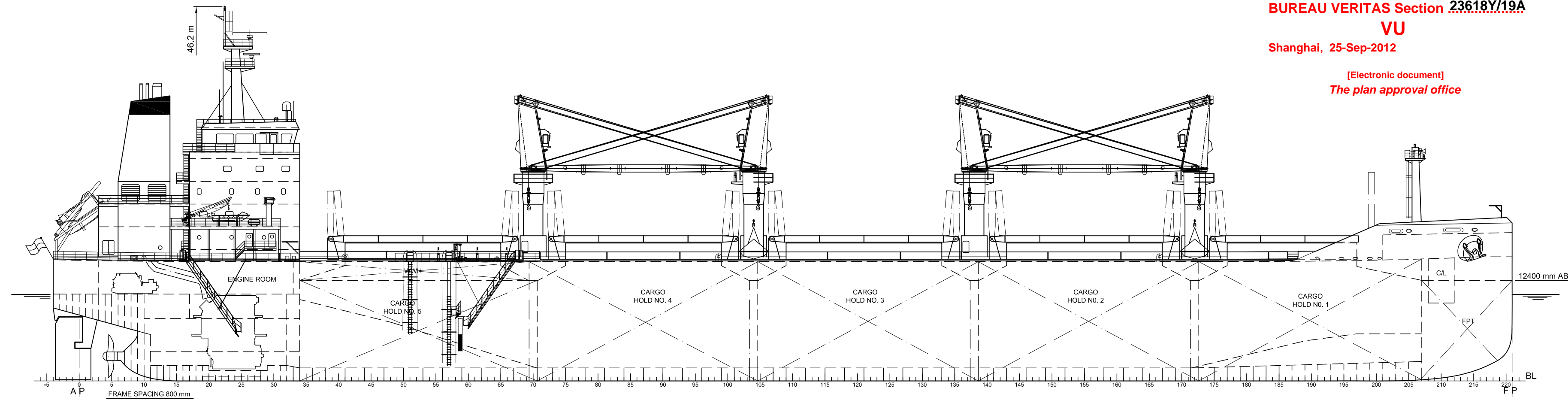
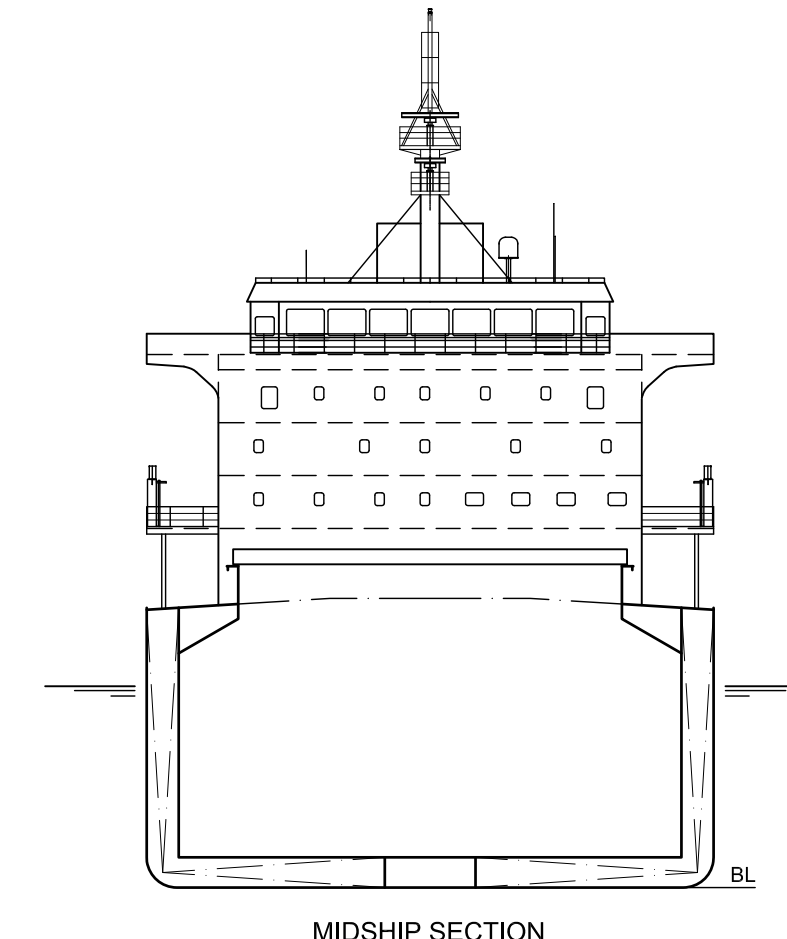


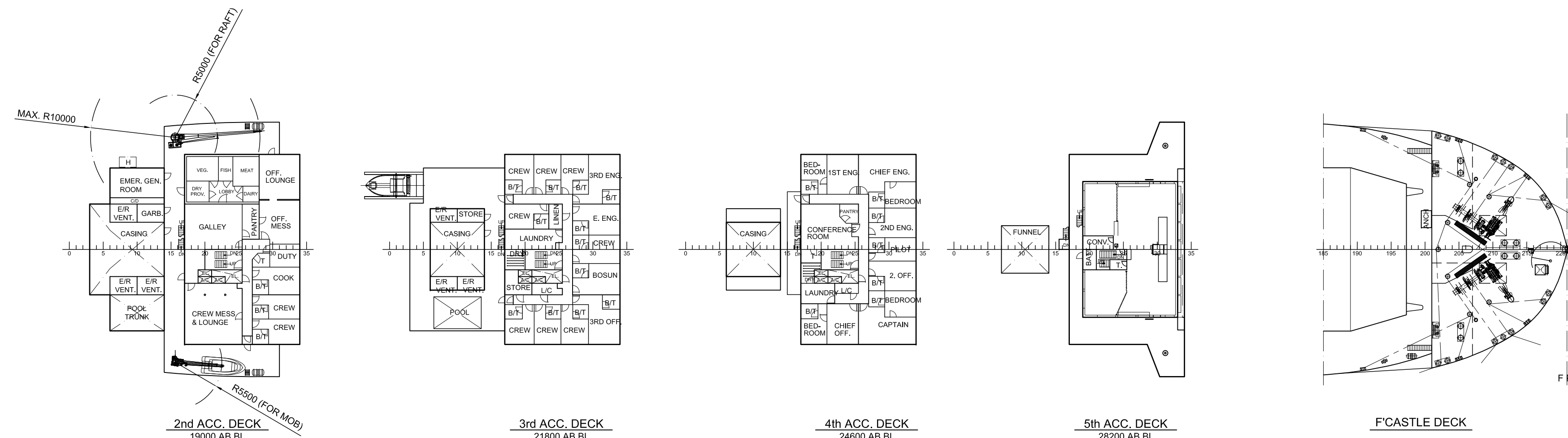
- WHEELHOUSE TOP
31200 mm AB. BL
- 5th ACC. DECK
28200 mm AB. BL
- 4th ACC. DECK
24600 mm AB. BL
- 3rd ACC. DECK
21800 mm AB. BL
- 2nd ACC. DECK
19000 mm AB. BL
- 1st ACC. DECK 16200 mm AB. BL
- UPPER DECK (SIDE)
14700 mm AB. BL
- A-DECK 10700 mm AB. BL
- B-DECK 7700 mm AB. BL
- E/R FLOOR 3750 mm AB. BL
- TANK TOP
1600/1905 mm AB. BL



PROFILE



MIDSHIP SECTION



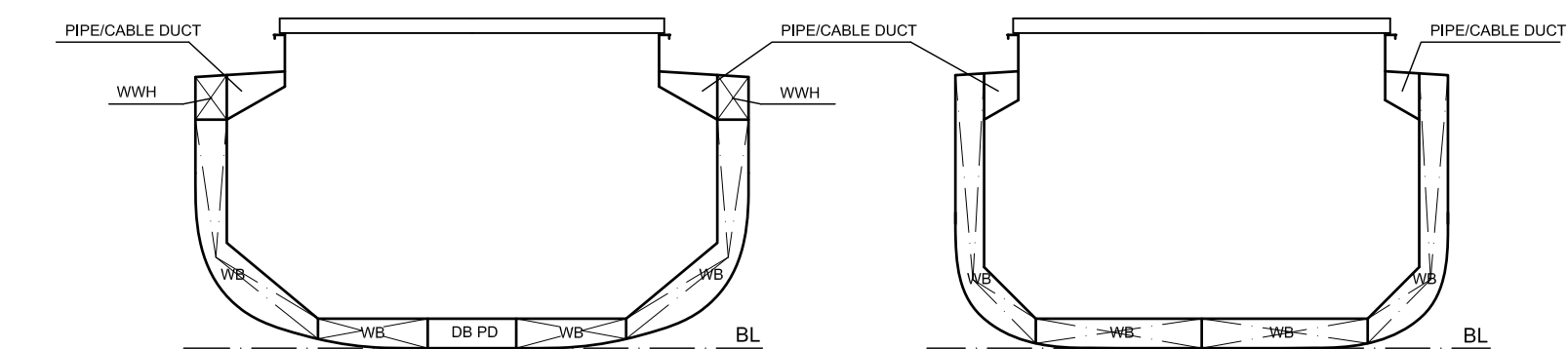
2nd ACC. DECK
19000 AB BL

3rd ACC. DECK
21800 AB BL

4th ACC. DECK
24600 AB BL

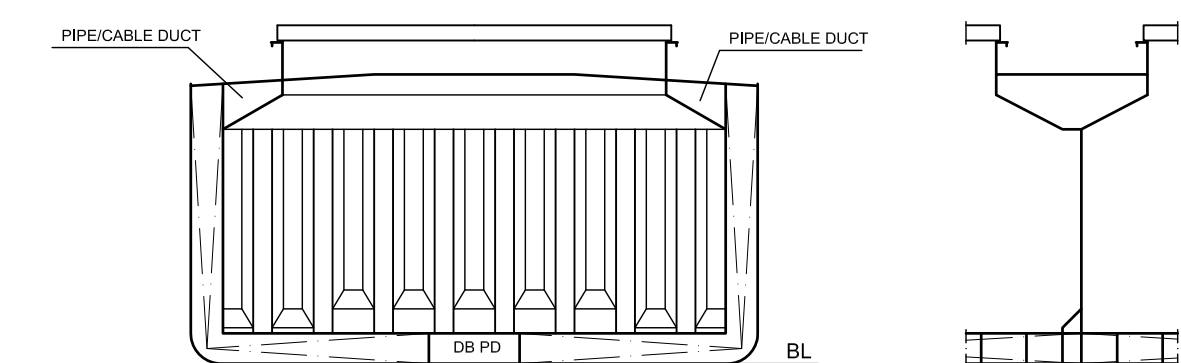
5th ACC. DECK
28200 AB BL

F'CASTLE DECK



CARGO HOLD NO. 5

CARGO HOLD NO. 1



TRANSVERSE BULKHEAD

A1 009-01

SEAHORSE 375 - 37,500 DWT BULK CARRIER

MAIN DIMENSIONS (ALL APPROX):

LENGTH OA MAX.	: 180.00 m
LENGTH PP APPROX.	: 176.75 m
RULE LENGTH	: 174.55 m
BREADTH (MLD)	: 30.00 m
DEPTH TO UPPER DECK (MLD)	: 14.70 m
CARGO CAPACITY (100%)	: 46,700 m ³
DWT (SCANTLING DRAUGHT)	: 37,300 t
DESIGN DRAUGHT	: 10.10 m
SCANTLING DRAUGHT	: 10.65 m
CB (SCANTLING DRAUGHT)	: 0.84
SERVICE SPEED (DESIGN DRAUGHT)	: 14.00 kn
CORRESPONDING OUTPUT (15% SEA MARGIN)	: 5,675 kW

CLASS NOTATION:

BV I, +HULL, +MACH, Bulk Carrier CSR, BC-A (holds 2,4 may be empty), ESP, unrestricted navigation, GRAB[20], AUT-UMS, MON-SHAFT, INWATERSURVEY, CPS(WBT), ICE CLASS IC

NOTE:

VESSEL IS PREPARED FOR LATER INSTALLATION OF LOG STANCHIONS. THUS, DWT IS REDUCED TO 37,000 t.

Revision/Description	Dgn./Eng.	Control	Approval	Date
-	-	-	-	-
-	-	-	-	-
-	-	-	-	-
-	-	-	-	-

Revision/Description	Dgn./Eng.	Control	Approval	Date
-	-	-	-	-
-	-	-	-	-
-	-	-	-	-
-	-	-	-	-



Marine
Naval Architects - Marine Engineers - Surveyors
Scale 1:400
Size 841x594
Job

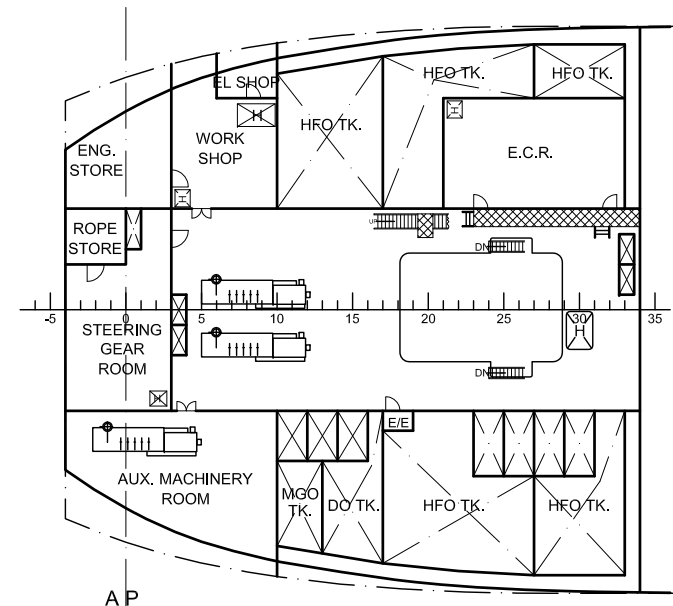
Dgn./Eng. LTA
Control KHU
Approval DOS
Date 2012-08-15
Job No.

SEAHORSE 375 - GYSB
GUOYU SHIPBUILDING NOS.GY205,GY206

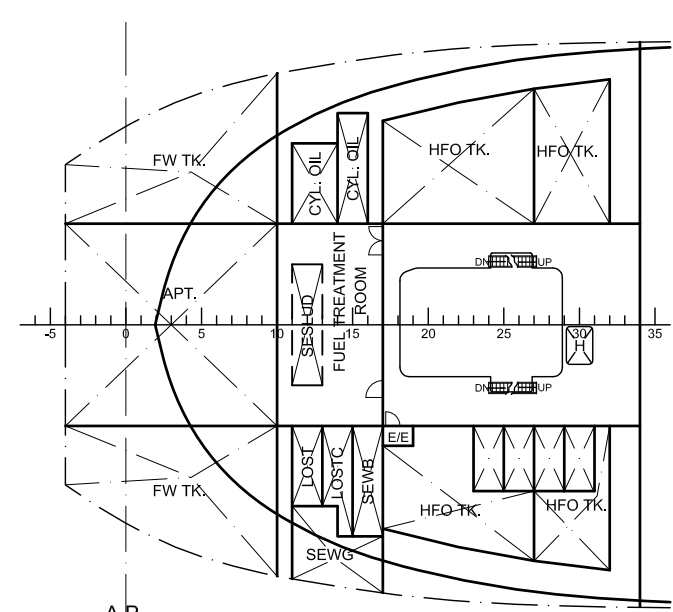
40.5299.02
Drawing No.

GENERAL ARRANGEMENT

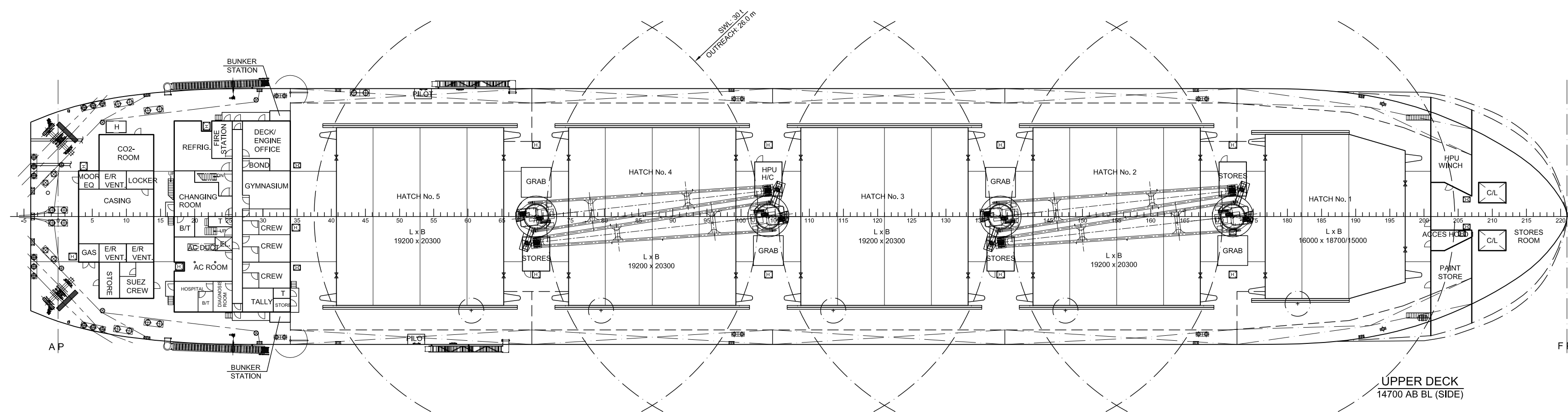
009-01 0



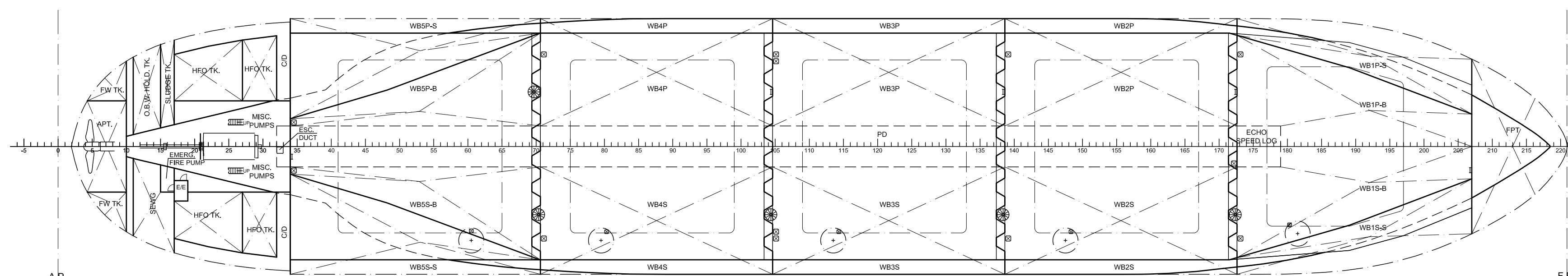
A-DECK
10700 AB BL



B-DECK
7700 AB BL



UPPER DECK
14700 AB BL (SIDE)



TANK TOP
1600/1905 AB BL